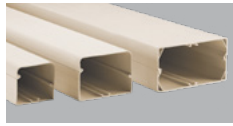


# DIVERSITECH® SPEEDICHANNEL™ SYSTEM

## PROJECT INFORMATION

### SpeediChannel - 6 1/2' Long Channel

	NATURAL	BROWN	WHITE	QTY
3"	230-D3	230-D3B	230-D3W	
4"	230-D4	230-D4B	230-D4W	
6"	230-D6		230-D6W	



### Wall Penetration

	NATURAL	BROWN	WHITE	QTY
3"	230-WC3	230-WC3B	230-WC3W	
4"	230-WC4	230-WC4B	230-WC4W	
6"	230-WC6		230-WC6W	



### Union Coupling

	NATURAL	BROWN	WHITE	QTY
3"	230-CP3	230-CP3B	230-CP3W	
4"	230-CP4	230-CP4B	230-CP4W	
6"	230-CP6		230-CP6W	



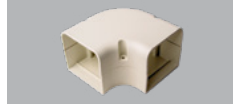
### 90° Long Radius Flat Bend

	NATURAL	BROWN	WHITE	QTY
3"	230-LFB3	230-LFB3B	230-LFB3W	
4"	230-LFB4	230-LFB4B	230-LFB4W	
6"	230-LFB6		230-LFB6W	



### 90° Flat Bend

	NATURAL	BROWN	WHITE	QTY
3"	230-FB3	230-FB3B	230-FB3W	
4"	230-FB4	230-FB4B	230-FB4W	
6"	230-FB6		230-FB6W	



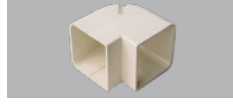
### 90° Inside Elbow

	NATURAL	BROWN	WHITE	QTY
3"	230-EB3	230-EB3B	230-EB3W	
4"	230-EB4	230-EB4B	230-EB4W	
6"	230-EB6		230-EB6W	



### 90° Outside Elbow

	NATURAL	BROWN	WHITE	QTY
3"	230-EIN3	230-EIN3B	230-EIN3W	
4"	230-EIN4	230-EIN4B	230-EIN4W	
6"	230-EIN6		230-EIN6W	



### 45° Flat Bend

	NATURAL	BROWN	WHITE	QTY
3"	230-FB453	230-FB453B	230-FB453W	
4"	230-FB454	230-FB454B	230-FB454W	
6"	230-FB456		230-FB456W	



### Adjustable Flat Bend

	NATURAL	BROWN	WHITE	QTY
3"	230-AFB3		230-AFB3W	
4"	230-AFB4		230-AFB4W	



### T-Joint

	NATURAL	BROWN	WHITE	QTY
4"	230-TJ4	230-TJ4B	230-TJ4W	
6"	230-TJ6		230-TJ6W	



### Reducer Coupling

	NATURAL	BROWN	WHITE	QTY
3" x 4"	230-TC34		230-TC34W	
4" x 6"	230-TC46		230-TC46W	



### Soffit Fittings

	NATURAL	BROWN	WHITE	QTY
3"	230-SF3		230-SF3W	
4"	230-SF4		230-SF4W	



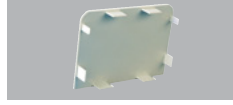
### Duct End

	NATURAL	BROWN	WHITE	QTY
3"	230-DE3	230-DE3B	230-DE3W	
4"	230-DE4	230-DE4B	230-DE4W	
6"	230-DE6		230-DE6W	



### Cap

	NATURAL	BROWN	WHITE	QTY
3"	230-DC3		230-DC3W	
4"	230-DC4		230-DC4W	
6"	230-DC6		230-DC6W	



### Flat Wall Escutcheon

	NATURAL	BROWN	WHITE	QTY
3"	230-FR3		230-FR3W	
4"	230-FR4		230-FR4W	
6"	230-FR6		230-FR6W	



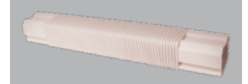
### Wall Escutcheon

	NATURAL	BROWN	WHITE	QTY
3"	230-WR3		230-WR3W	
4"	230-WR4		230-WR4W	
6"	230-WR6		230-WR6W	



### Flex Joint

	NATURAL	BROWN	WHITE	QTY
3"	230-FJ3			
4"	230-FJ4			

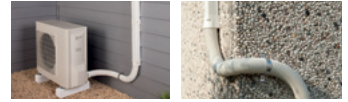


### Flex Hose Connection Kit

	NATURAL	BROWN	WHITE	QTY
3"	230-FH3-KIT		230-FH3W-KIT	
4"	230-FH4-KIT		230-FH4W-KIT	



Flex Hose Kits Easily Connects Channel to Condensing unit or around obstacles.

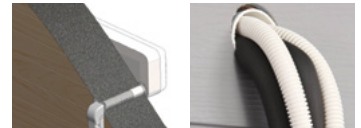


### Wall Sleeve

	NATURAL	BROWN	WHITE	QTY
2-1/2"	230-WS2			



The Wall Sleeve Protects Line Sets, insulation and drain hoses from damage when penetrating through walls.



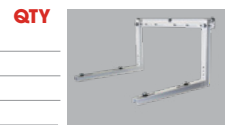
### Hef-T-Brackets

	NATURAL	BROWN	WHITE	QTY
230-B2M			Medium 18" Arm Length	
230-B2L			Large 21" Arm Length	



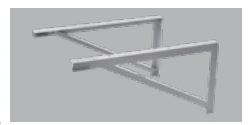
### Quick-Sling Wall Brackets

	NATURAL	BROWN	WHITE	QTY
QSWB2000			350lbs	
QSWB2000SS			350lbs Stainless Steel	
QSWB4000			500lbs	
QSWB4000SS			500lbs Stainless Steel	



### Split System Wall Brackets

	NATURAL	BROWN	WHITE	QTY
ACB-30			AC Bracket, 30" 600lbs	
ACB-36			AC Bracket, 36" 600lbs	
ACB-42			AC Bracket, 42" 600lbs	
ACB-48			AC Bracket, 48" 600lbs	



### Mini-Split Equipment Stands

	NATURAL	BROWN	WHITE	QTY
QSMS1201			12" High Mini-Split Stand	
QSMS1801			18" High Mini-Split Stand	
QSMS2401			24" High Mini-Split Stand	



### Mounting Blocks

	NATURAL	BROWN	WHITE	QTY
230-MB14W			14" Hef-T-Block Pack of 2	
230-MB17W			17" Hef-T-Block Pack of 2	
230-MB36W			36" Hef-T-Block Pack of 2	



### Equipment Pads - E Lite

	NATURAL	BROWN	WHITE	QTY
EL3030-3			30" x 30" x 3"	
EL3232-3			32" x 32" x 3"	
EL3636-3			36" x 36" x 3"	
EL1838-3			18" x 38" x 3"	
EL3640-2			36" x 40" x 2"	



