

clear vueKübe

DESIGNED FOR
**DUCTLESS
SYSTEMS**



Training Presentation

clear vueKübe

Course Objectives:

- Explain the unique features of this pump
- Teach you how to present these to customers to achieve the best results
- Help you make the sale



clear vueKübe

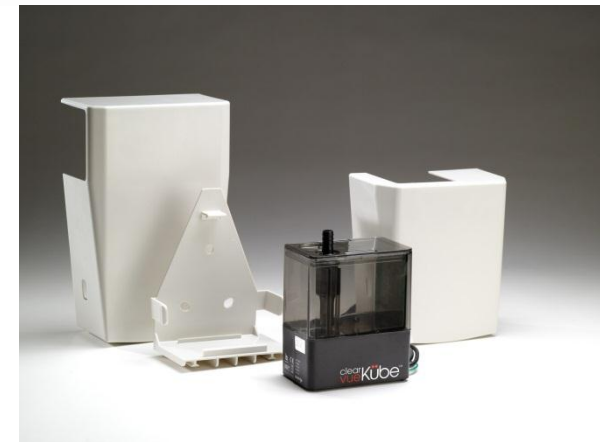
What is ClearVueKübe?

ClearVueKübe is the ideal condensate pump for ductless systems (mini-splits). ClearVueKübe is compact (so it fits anywhere), quieter (so you can't hear it) and less prone to clogging than any other condensate pump.



clearVueKübe

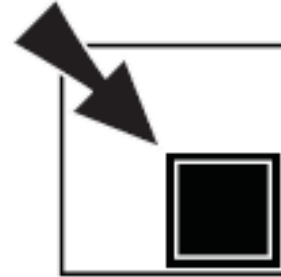
- 15' lift
- 66 GPH flow rate
- Includes:
 - AC power supply
 - Metal hanging clip
 - Complete instruction manual
 - Optional shroud cover kit



Item #	Description	UOM	OM
IQP-KUBE	ClearVueKübe pump kit	EA	6
IQP-KUBE-SHROUD	ClearVueKübe pump and shroud cover system	EA	6

clear vueKübe

ClearVueKübe is compact



- Small size – 4” long x 2.5” wide x 6” high
- Weighs less than 1 lb.
- Fits almost anywhere
- Fits into floor cassettes and adjacent to ceiling/duct units



clear vueKübe



ClearVueKübe is quiet

- Super quiet pump
- Ideal for installations in/near living areas
- Quieter than any other condensate pump



clear vueKübe

ClearVueKübe – No Clog technology



- Smallest tank pump available
- Proven reliability of other DiversiTech pumps
- More reliable than typical piston/solenoid pumps for ductless systems
- Fewer problems, more performance
- No Float, No Problem



clear vueKübe

No Float, No Problem!

- Floatless Sensor technology
- No stuck floats, misaligned contacts
- Fits almost anywhere
- Fits into floor cassettes and adjacent to ceiling/duct units

**FLOATLESS
SENSOR** 



clear vueKübe

Variable Speed and Lift

- Allows pump to “think” and adjust
- Variable speed motor
- Adjusts lift based on conditions
- Helps pump run quieter and more efficiently



clear
vue Kübe

Pump Selector Guide

clear vue KÜbe

Key Message Points

- Super Quiet operation
 - ideal for ductless systems since pumps are often installed in/near living areas
- Compact size
 - fits almost anywhere
- No clog technology
 - Smallest centrifugal pump, will not clog like older solenoid/piston pumps



**FLOATLESS
SENSOR** 

clear
vueKübe

Thank you !

